

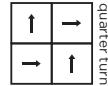
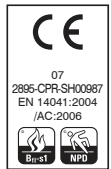
technical specifications

tiles

Fibre Composition	80% Polypropylene 15% Nylon 5% Recycled Polyester
Dimensions	50cm x 50cm
Pile Weight	940g/m ²
Total Weight	4050g/m ²
Total Thickness	7.5mm
Backing	BioBase[®] recycled backing (recycled BS EN ISO 14021)
Wear Classification	Heavy Contract
Flammability	Euroclass Bfl-s1
Thermal Resistance	Tog Rating 0.84
Castor Chair Rating	Pass - continuous use (BS EN 985)
Static Loading	BS 4939:1987 (2003) Recovery >80% (24hrs)
Dynamic Loading	BS ISO 2094:1999 (2005) Loss <20% (1000 impacts)
Body Voltage Test	BS ISO 6356:2000 <2kV
Colour Fastness To Light	BS EN ISO 105 - B02 Minimum grade 6
Colour Fastness To Shampoo	BS 1006:UK-TB: 1990 Minimum Grade 4
Sound Absorption Coefficient	BS EN 354:2003
Reduction in Impact Noise	BS EN ISO 10140-3:2010 21dB
Reduction in Impact Noise at 1000Hz	BS EN ISO 140-8: Part 8: 1998 30.7dB
VOC	A+
Warranty	15 years
Number of Tiles per Box	20 (5m ²)

sheet

80% Polypropylene 15% Nylon 5% Recycled Polyester
30cm x 2cm
940g/m ²
5.5mm
Heavy Contract
Euroclass Bfl-s1
Tog Rating 0.84
Pass - continuous use (BS EN 985)
BS 4939:1987 (2003) Recovery >80% (24hrs)
BS ISO 2094:1999 (2005) Loss <20% (1000 impacts)
BS ISO 6356:2000 <2kV
BS EN ISO 105 - B02 Minimum grade 6
BS 1006:UK-TB: 1990 Minimum Grade 4
BS EN 354:2003
BS EN ISO 10140-3:2010 19dB
BS EN ISO 140-8: Part 8: 1998 30.7dB
A+
15 years



FM 01440 EMS 784147

eco₂matters[®]

We are committed to helping deliver a sustainable future, because we believe that what we do **matters**. To help us deliver on this commitment, we have developed **eco₂matters[®]** sustainability goals, supported by the independently 3rd party verified **eco₂matters[®]** ecosystem.



Journey to Net Zero & Beyond



Positive Environmental Impact



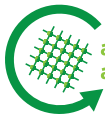
Social Values & Well Being

Made from solution dyed fibres including 5% recycled polyester and our unique **BioBase[®]** recycled backing, **academy[®]** is **low carbon**. The extremely durable broad ribbed carpet, available in tile or sheet making it easy to maintain, and features **anti-fray** and **anti-ravel** technology. The palette of 24 colours is an ideal choice for use in schools, colleges and universities, perfect for heavy footfall environments.



low carbon

academy[®] is **low carbon**



anti-fray anti-ravel

academy[®] features **anti-fray/anti-ravel** technology



BioBase[®] backing

academy[®] tiles use **BioBase[®] recycled** backing



take back service

Burmatex[®] reco₂very take back service provides a no landfill solution for your used tiles



100% certified renewable

Burmatex[®] products are made using 100% certified **renewable** electricity



independently 3rd party verified

eco₂matters[®] declarations are independently 3rd party verified

EPD

Burmatex[®] products are supported by 3rd party independently verified, product specific EPD's

LEED

Burmatex[®] products contribute towards Leed accreditation

SKA

Burmatex[®] products adhere to SKA standards

WELL Building Standards

Burmatex[®] products contribute to WELL Building Standards

Contact Us
T +44 (0) 1924 262 525
email: sales@burmatex.co.uk

Burmatex Ltd
Victoria Mills, The Green
Ossett, West Yorkshire
WF5 0AN, United Kingdom

LRV values

Product code tiles	Product code sheet	Product colour name	CIE Y
11805	11505	diamond grey	10.38
11803	11503	grey cloud	5.25
11802	11502	charcoal grey	3.45
11801	11501	ebony slate	2.03
11804	11504	storm grey	8.99
11817	11517	denim blue	7.14
11807	11507	ink blue	2.71
11864	11564	midnight sky	2.27
11819	11519	horizon blue	7.61
11814	11514	atlantis blue	3.99
11862	11562	sapphire blue	3.44
11822	11522	turquoise blue	4.92
11834	11534	honey beige	11.83
11878	11578	sandy beige	7.48
11865	11565	earth brown	4.51
11871	11571	sage green	8.16
11867	11567	saffron yellow	21.24
11868	11568	tangerine orange	14.14
11830	11530	lime green	9.42
11883	11583	emerald green	4.87
11874	11574	lilac iris	6.16
11884	11584	dark violet	2.78
11877	11577	purple orchid	3.72
11870	11570	cherry red	2.93