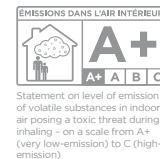
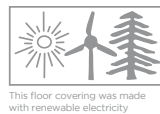
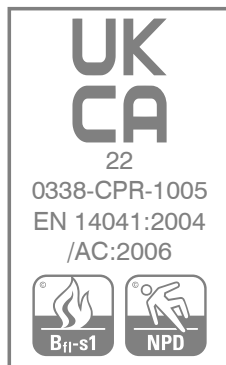
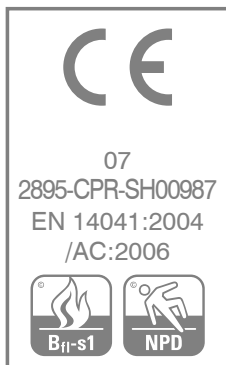
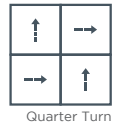


technical specifications

Product Name	Academy
Product Description	Fibre Bonded
Pile Yarn Description	85% Polypropylene 15% Nylon
Tile Dimension	50cm x 50cm
Pile Weight	975g/m ²
Total Weight	4200g/m ²
Total Thickness	7.8mm
Backing Description	Accummen™, 75% recycled
Wear Classification	Heavy Contract
Flammability	Euroclass Bfl-s1
Thermal Resistance	Tog Rating 0.84; ISO 8302: 0.10 m ² K/W
Castor Chair Rating	BS EN 985 Pass - suitable for continuous use
Static Loading	BS 4939:1987 (2003) Recovery >80% (24hrs)
Dynamic Loading	BS ISO 2094:1999 (2005) Loss <20% (1000 impacts)
Body Voltage Test	BS ISO 6356:2000 <2kV
Colour Fastness To Light	BS EN ISO 105 – B02 Minimum grade 6
Colour Fastness To Shampoo	BS 1006:UK-TB: 1990 Minimum Grade 4
Number of Tiles per Box	20 (5m ²)
Reduction in Impact Noise	BS EN ISO 140-8: Part 8: 1998 21dB
Reduction in Impact Noise at 1000Hz	BS EN ISO 140-8: Part 8: 1998 30.7dB

For best results we recommend



environmental information

- Burmatex® products are EPD verified by an independent third-party verification of the declaration and data, according to ISO 14025:2006. For specific ratings, please refer to www.environdec.com
- Burmatex® products qualify for SKA as they achieve one or more requested criteria
- Burmatex® products can contribute to the WELL Building Standard™, which focuses on the people and healthy workspaces
- All Burmatex® carpet/carpet tile/carpet plank ranges are made at its single UK manufacturing site
- Wherever possible, raw materials including yarn/fibre are sourced locally i.e. within 20 miles
- 77% of Burmatex® BioBase™ backing comes from recycled materials
- Continuous assessment and improvement of manufacturing process to minimise use of raw materials/power
- All manufacturing waste is recycled and all electricity used is from renewable resources
- All Burmatex® products are heavy contract with a 10 year guarantee for maximum useful life
- Certified, Class A+: very-low VOC Emission

LEED® v4 - Burmatex® products can contribute towards satisfying the following credits for LEED v4: NC-v4/CI-v4 MRC2/MRC3 (Building product disclosure and optimization - environmental product declarations), MRC3/MRC4 (Building product disclosure and optimization - sourcing of raw materials), EQc1 (Enhanced indoor air quality strategies), EQc2 (Low-emitting materials), EQc6 (Interior lighting - Option 2. Lighting quality (E - H)) and EQc9 (Acoustic Performance). Products are not reviewed under LEED. LEED credit requirements cover the performance of materials in aggregate, not the performance of individual products or brands. For more information on LEED, visit www.usgbc.org/contact

Burmatex Ltd
Victoria Mills, The Green
Ossett, West Yorkshire
WF5 0AN
United Kingdom

T +44 (0) 1924 262 525
F +44 (0) 1924 280 033
UK email: projects@burmatex.co.uk
International email: international@burmatex.co.uk
www.burmatex.co.uk

Burmatex® reserves the right to improve the specification of all products without prior notification. E&OE
Burmatex® carpets and carpet tiles should be installed and used in full accordance with instructions at www.burmatex.co.uk and recognised trade standards.
Orders are subject to Burmatex® terms and conditions of sale. See: www.burmatex.co.uk

LRV values for **academy**

Product code	Product colour name	CIE Y	CIE L
11801	sedburgh slate	2.03	15.65
11802	gresham grey	3.45	21.75
11803	gordonstoun grey	5.25	27.44
11804	durham steel	8.99	35.97
11805	sherborne grey	10.38	38.51
11807	kings navy	2.71	18.85
11808	marlborough blue	4.24	24.45
11811	repton blue	3.65	22.48
11812	stamford sapphire	3.21	20.85
11813	malvern mauve	5.86	29.06
11814	oriel blue	3.99	23.64
11817	winchester blue	7.14	32.11
11819	bradfield blue	7.61	33.16
11822	harrow green	4.92	26.51
11823	monmouth moss	6.55	30.75
11825	rossall jade	6.43	30.48
11830	loretto lime	9.42	36.79
11831	rishworth brown	3.08	20.37
11832	buckingham beige	7.11	32.05
11834	hereford stone	11.83	40.95
11839	oundle orange	11.07	39.70
11843	keble rose	3.90	23.35
11851	rugby red	3.98	23.60
11880	exeter indigo	3.29	21.17
11881	strathallan blue	5.85	29.02
11882	dover teal	9.47	36.88
11883	ackworth green	4.87	26.36
11884	wellington purple	2.78	19.15
11885	rougemont red	4.81	26.18
11886	dulwich pink	4.53	25.36
11887	epsom gold	14.50	44.94
11888	kingsmead gold	16.06	47.05